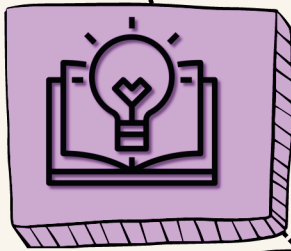
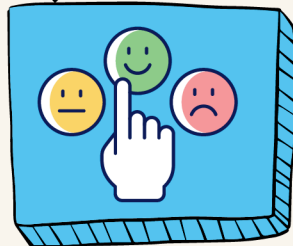


Furzefield Primary School: Summary Development Plan 2024-2025



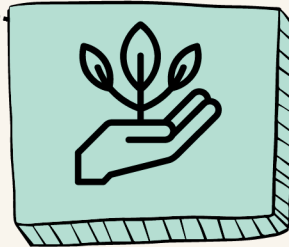
Quality of Education

- Improve phonics screening check outcomes.
- Narrow the gap between disadvantaged and non-disadvantaged pupils.
- Develop & improve assessment systems, how we track progress and how we moderate assessments.
- Improve how we track progress for pupils with SEND and improve general efficacy and efficiency of our SEND provision.



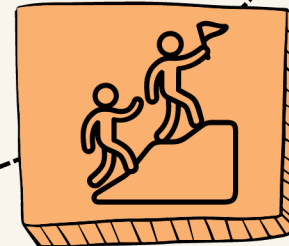
Behaviour & Attitudes

- Embed our behaviour curriculum.
- Create consistency in behaviour management approach.
- Strengthen home/school links and relationships.
- Provide more structured support for children with high needs and frequent dysregulation.



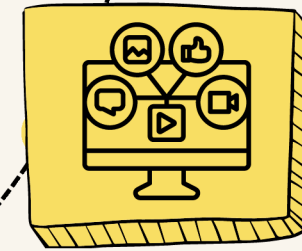
Personal Development

- Promote and strengthen Equality, Diversity and Inclusion (EDI) within school.
- Ensure children learn how to live alongside and show respect for a diverse range of people.
- Enhance pupil voice opportunities



Leadership & Management

- Provide PD opportunities for all staff - encourage ambition and empower others to lead,
- Plan for the future: Offer opportunities that lead to strong succession planning.
- Develop external partnerships and collaborate more effectively with other schools.
- Navigate & guide through academisation (communicate frequently and transparently).



Digital strategy

- Bring AI into school this year for some pupils and for all staff.
- Prepare for the future - upskill, inform and improve understanding of what our vision for 21st century teaching & learning is.
- Empower staff to be digital leaders in their classrooms and embrace technology to improve outcomes and reduce their workload.

